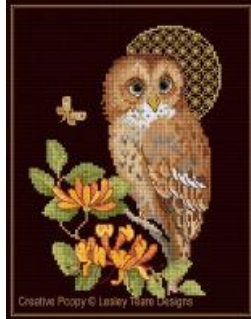


**Tawny Owl with decorative Moon
cross stitch pattern
by Lesley Teare Designs**



Manufacturer: Lesley Teare Designs
Reference: LJT688

Price: \$6.99

Options:

download pdf file : English

Description:

Tawny Owl with decorative Moon

CROSS STITCH PATTERN READY TO DOWNLOAD, DESIGNED BY Lesley Teare Designs

Head turned sideways, this owl is keeping watch, eyes wide open in the night. The full moon appears just behind. The owl's feet clutch the higher branches of a honeysuckle bush.

There are beautiful gold metallic highlights in this cross stitch pattern, with lace like motifs embellishing the large round moon.

A tutorial is included with the chart for all stitches.

A cross stitch pattern by Lesley Teare Designs.

>> see more [Bird patterns by Lesley Teare Designs](#)

Chart info & Needlework supplies for the pattern:
Tawny Owl with decorative Moon

Chart size in stitches: 98 x 126 (wide x high)

Needlework fabric: 14ct Aida or 28ct Evenweave, Black

>> [View size in my choice of fabric \(fabric calculator\)](#)

Stitches: cross stitch, backstitch

Chart: color

Threads: DMC, Gold metallic of your choice

Number of colors: 23

Themes: night-time owl, moonlight, round full moon

>> see all [night time and moonlit patterns](#) (all designers)

>> see all [patterns with Owls](#) (all designers)

All patterns on Creative Poppy's website are printable and available for instant download.

[Link to the product](#)