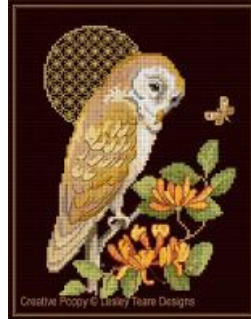


**Barn Owl with decorative Moon  
cross stitch pattern  
by Lesley Teare Designs**



**Manufacturer: Lesley Teare Designs**  
**Reference:LJT687**

**Price: \$6.99**

**Options:**

***download pdf file* : English**

**Description:**

**Barn Owl with decorative Moon**

CROSS STITCH PATTERN READY TO DOWNLOAD, DESIGNED BY Lesley Teare Designs

This night time pattern cross stitched on black needlework fabric features an owl perched on the branches of honeysuckle. It's body is seen from sideways, while its head is pivoted towards us, sharp eyes keeping watch.

The stitched work is highlighted with Gold metallic, in particular the large full moon, exquisitely decorated with fine lace like backstitch motifs.

A tutorial is included with the chart for all stitches.

A cross stitch pattern by Lesley Teare Designs.

>> see more [Bird patterns by Lesley Teare Designs](#)

**Chart info & Needlework supplies for the pattern:  
Barn Owl with decorative Moon**

Chart size in stitches:98 x 126 (wide x high)

Needlework fabric: 14 ct Aida or 28 ct evenweave, Black

>> [View size in my choice of fabric \(fabric calculator\)](#)

Stitches: cross stitch, backstitch

Chart: color

Threads: DMC, Gold metallic of your choice

Number of colors: 23

Themes: night time, moonlight, owl at night

>> see all [night time and moonlit patterns](#) (all designers)

>> see all [patterns with Owls](#) (all designers)

All patterns on Creative Poppy's website are printable and available for instant download.

[Link to the product](#)